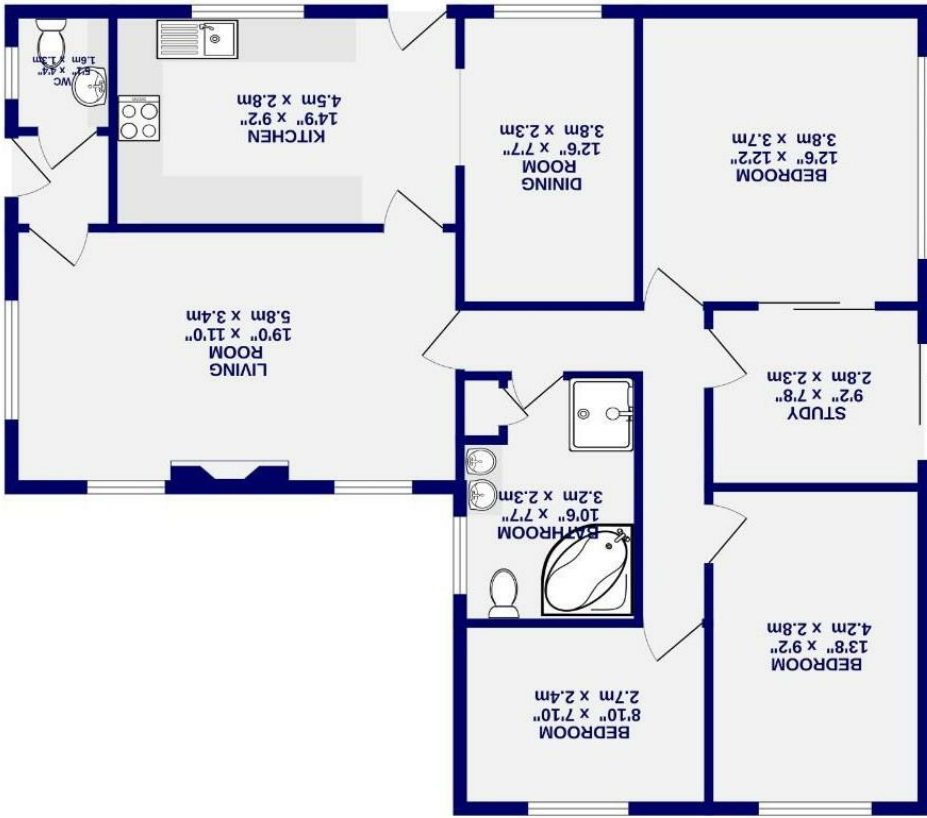


- Curlew Glebe
Dunnington, York
YO19 5PQ



TOTAL FLOOR AREA: 1046 sq. ft. (97.2 sq.m.) approx.

Curlew Glebe
Dunnington, York
YO19 5PQ

Offers Over £350,000

4 1

Nestled within the highly sought after village of Dunnington, just east of York, is this charming detached bungalow. Positioned on a leafy, private corner plot and set back from the road, this beautifully situated home offers a rare opportunity in one of the area's most desirable locations. Dunnington is a picturesque village offering a wealth of amenities, including local shops, popular eateries, well-regarded schools, Tennis Club and convenient commuter links to York city centre and the train station.

Through the front vestibule, you are welcomed into a spacious and light-filled living room, bathed in natural daylight from multiple windows on dual aspects. This inviting space is ideal for relaxing and features a traditional cast iron and tiled gas coal-effect fireplace as its charming focal point. To the rear of the living room, a doorway leads to the kitchen and separate inner hallway. The kitchen boasts a range of cottage-style wall and base units, offering ample storage and generous worktop space. Just off the kitchen, a separate breakfast dining room provides the perfect setting for casual dining or entertaining.

From the inner hallway are four bedrooms. The primary bedroom, positioned to the rear, includes built-in wardrobes and view of the garden. A smaller bedroom, currently used as a study enjoys garden access via sliding patio doors. Two further well-proportioned bedrooms, set to the side and rear, offer peaceful garden outlooks. There is a generously appointed bathroom with a corner bath, dual sinks, WC, and separate shower. A handy additional WC is located near the front door and completes the accommodation.

